



IMPLEMENTATION OF MID DAY MEAL SCHEME vis-a-vis NATIONAL FOOD SECURITY ACT, 2013 IN ARUNACHAL PRADESH FOR THE PERIOD 2018-2021
[MID DAY MEAL SCHEME]

1. Brief History

Mid-Day Meal in schools has had a long history in India. In 1925, first Mid-Day Meal programme was introduced for disadvantaged children in Madras Municipal Corporation. By mid 1980 three States, viz. Gujarat, Kerala and Tamil Nadu had universalized a cooked mid-day meal programme with their own resources for children studying at the primary stage. By 1990-91, the number of States implementing the MDM programme with their own resources had increased significantly.

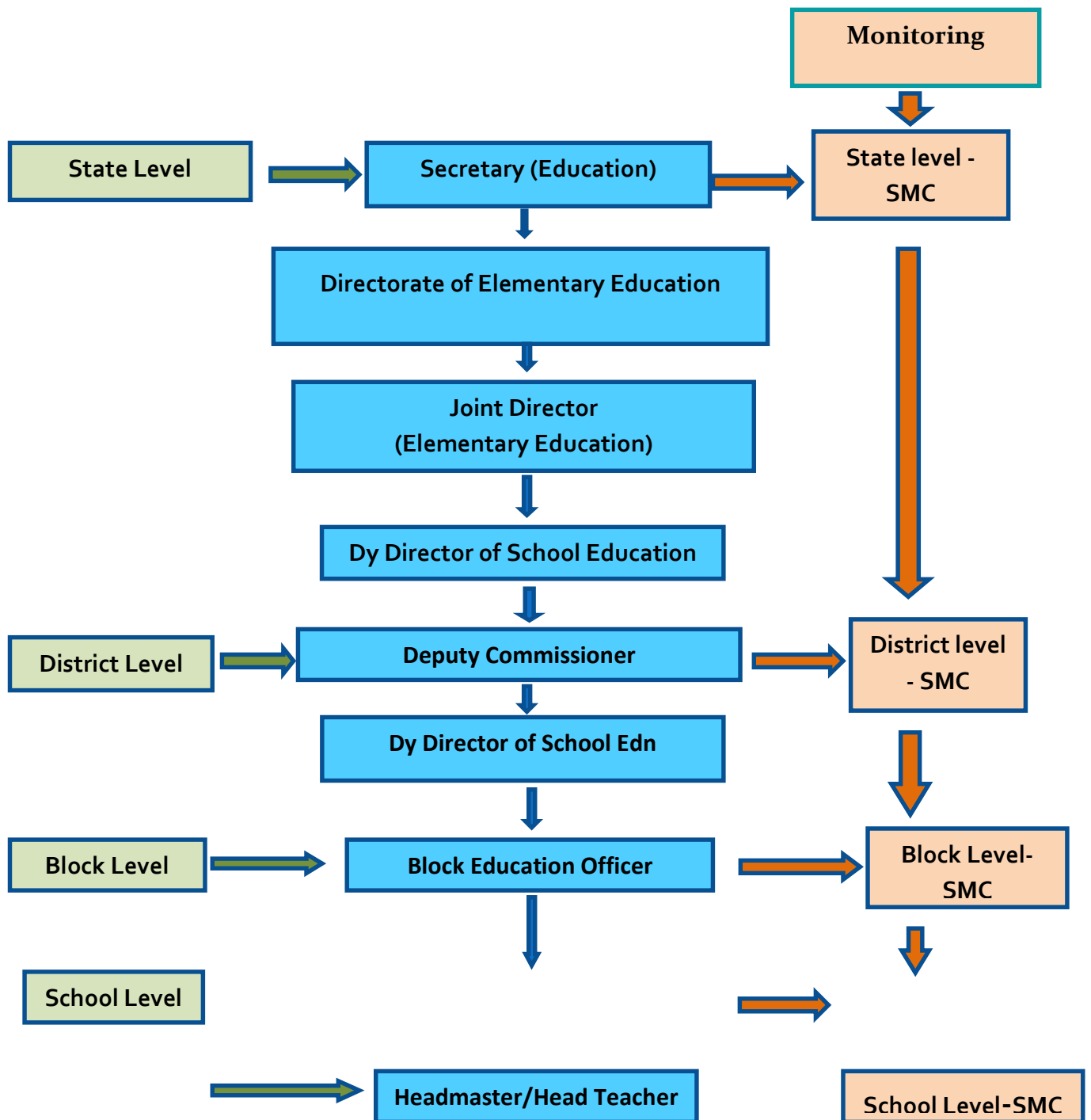
The Government of India initiated the National Programme of Nutritional Support to Primary Education (NP-NSPE) on 15 August 1995. The objective of the scheme is to help improve the effectiveness of primary education by improving the nutritional status of primary school children. Initially, the scheme was implemented in 2,408 blocks of the country to provide food to students in classes I-V of government, government-aided and local body run schools. By 1997-98, the scheme had been implemented across the country. Under this programme, a cooked mid-day meal with 300 calories and 12 gram of proteins is provided to all children enrolled in classes I to V. In October 2007, the scheme included students in upper primary classes of VI to VIII in 3,479 educationally backward blocks, and the name was changed from National Programme for Nutrition Support to Primary Education to National Programme of Mid Day Meals (MDM) in Schools.

2. INTRODUCTION

- In 1980 three States, viz. Gujarat, Kerala and Tamil Nadu had universalized a cooked mid-day meal programme with their own resources for children studying at the primary stage.
- The Government of India initiated the National Programme of Nutritional Support to Primary Education (NP-NSPE) on 15 August 1995.
- Accordingly, the MDMPprogramme was first launched in Arunachal Pradesh on 15th August, 1995 with the rest of States of Indian Union.
- Initially only raw rice was provided to the children, but from 2003-04 onwards, in addition to food grains, the Central Government began to provide two other major components, viz. cost of cooking and provision of essential infrastructure in order to serve hot cooked meals to the children as per the Directives of the Hon'ble Supreme Court of India.
- In Arunachal Pradesh the MDM scheme was initially implemented by Department of Civil Supply. However, from 2005-06 onwards the MDM scheme was handed over to Department of Education.

3. Mid-Day Meal (MDM) Scheme in Arunachal Pradesh

The MDM Programme was first launched in the State on 15th August, 1995 in five districts with the rest of States of Indian Union. Initially only raw rice was provided to the children, but from 2003-04 onwards, in addition to food grains, the Central Government began to provide two other major components, viz. cost of cooking and provision of essential infrastructure in order to serve hot cooked meals to the children as per the Directives of the Hon'ble Supreme Court of India.



Joint inspection team comprising representatives from District Education Department, District Civil Supply Department and FCI Officials to carry out joint inspections for ensuring lifting of FAQ foodgrains under Mid Day Meal in respective district.

4. System for Transportation and distribution of food grains:

The District Administration/Deputy Commissioner floats quotation for nomination of a carriage contractor/transporter for lifting, transportation and delivery of foodgrains (rice) from FCI designated depot to schools under proper monitoring and supervision of the Deputy Director of School Education and Block Education Officer at district and block level. The current rate of transport assistance at the flat rate Rs.260 per quintal from FCI godown to schools is not adequate to meet the cost disability of delivery of food grains to schools located in interior areas of Arunachal Pradesh.

5. Storage facility at different levels after lifting of food grains from FCI depot

There is acute shortage of storage facility for proper storage of food grains at district, block and school levels. Foodgrains are stored in rented house at district/block headquarters before delivery to respective schools. Because of dilapidated conditions of kitchen-cum-store food grains/ food items are stored in office room of the school. There is always a fear of theft of food items from schools. The carriage contractors have to manage their own storage facilities and expenses for this are borne from existing Transportation cost of food grains.

6. Cook-cum-helpers

Following are the norms for engagement of cook-cum-helper in the schools:

One cook- cum-helper for schools up to 25 students.

Two cooks-cum-helpers for schools with 26 to 100 students.

One additional cook-cum-helper for every addition of upto 100 students.

At present the cook-cum-Helpers are given honorarium amount of Rs.1000/- per month for 10 months in a year. At this rate, schools are finding it very difficult to engage cook-cum-helper on regular basis.

2.6.

7. Ensuring Quality of food

a) System of Tasting of food by teachers/community.

A committee is constituted with the Head of the school as chairman, a teacher, a SMC member and cooks to undertake the tasting of food/meals before serving it to the children on daily basis.

The members must taste the food/meals before serving it to the students every meal day and reports on tasting of meals are recorded in the school meal register. It will conduct meeting monthly to review the implementation aspects.

b) Testing of food sample by any recognized labs for prescribed nutrition and presence of contaminants such as microbes, e-coli .

There is no any reputed /accredited laboratory in the State of Arunachal Pradesh to carry out the testing of food samples served under Mid Day Meals. Due to absence of accredited laboratories for testing of food samples, Department is unable to test the mid day meals served to children for nutrient contents & quality checks. This is one of the main hindrances for starting centralized kitchen by involving NGOs in our State.

8. OBJECTIVE

- To improve the nutritional status of children in classes: I – VIII in Govt., Govt Aided Schools and EGS/AIE centers;
- To encourage poor children belonging to disadvantaged sections to attend school regularly;
- To reduce dropout rates and 100 percent retention in the schools.
- To narrow down the social distance among the different social-economic groups.

9. COMPONENTS UNDER MID DAY MEAL SCHEME DURING 2018-19

- 1) Supply of free **food grains** @ 100 grams per child per day for Primary and @150 grams per child per day for Upper Primary stage respectively.
- 2) De-centralization of payment of cost of food grains to FCI at district level.
- 3) **Cooking/Conversion Cost** @ Rs.4.35/- per child per meal day and Rs.6.51/- per child per meal day for Primary and Upper Primary stages respectively.
- 4) Reimbursement of **Transportation cost of food grains** (Rice) at flat rate of Rs.260/- per Quintal from FCI base depot to schools.
- 5) Construction of **Kitchen – cum- store and procurement of kitchen devices**.
- 6) Payment of **honorarium to cook-cum-helpers** @ Rs.1000/- PM.
- 7) Funding pattern for Cost of foodgrain, Transportation cost and kitchen devices is 100% Central share. Whereas, the funding pattern for Cooking cost, Kitchen-cum-store and Honorarium to cook-cum-helper is **90 : 10** for Central and State share.

10. NORMS FOR COST OF MEAL PER CHILD PER SCHOOL DAY

Break up of nutrition content and cost of meal per child per day as per State Nutrition/Expenditure norm including Central Assistance and State contribution (unit cost) for Primary and Upper Primary stage during 2018-19 are as under:

A: Primary

Sl. No.	Food Item	Quantity (in grams)	Cost of quantity recommended (in	Calories	Protein content (in
---------	-----------	---------------------	----------------------------------	----------	---------------------

			Rs)		grams)
1	Food grains (Rice)	100	Free of cost	310	6
2	Pulses	20	1.68	70	6
3	Vegetables (in leafy	50	1.23	25	0
4	Oil & fat	5	0.58	45	0
5	Salt & condiments	As per need	0.22	0	0
6	Fuel	As per need	0.64	0	0
7	Any other item	0		0	0
	Total	0	4.35	450	12

B: Upper Primary

Sl. No.	Food Item	Quantity (in grams)	Cost of quantity recommended (in Rs)	Calories	Protein content (in grams)
1	Food grains (Rice)	150	Free of cost	535	8
2	Pulses	30	2.75	105	12
3	Vegetables (in leafy	75	1.81	43	0
4	Oil & fat	7.5	0.90	67	0
5	Salt & condiments	As per need	0.23	0	0
6	Fuel	As per need	0.82	0	0
7	Any other item	0		0	0
	Total		6.51	750	20

11. COVERAGE DURING 2018-19:

(Govt-Government, LB-Local Body, GA-Govt. Aided, STC-Special Training Centre, CS-Community School)

a) No. of Institutions covered under MDM

Sl.No.	Stage	Govt + LB	GA	STC/CS	Total
1	Primary	1803	11	0	1814
2	Upper Pri. with Pri.	998	50	0	1048
3	Upper Primary	72	0	0	72
	Total	2873	61	0	2934

Source: UDISE/Directorate of Elementary Education, December 2018

b) No. of children covered under MDM

Sl.No.	Stage	Govt + LB	GA	STC/CS	Total
1	Primary	99808	8694	0	108502
2	Upper Primary	53997	5066	0	59063
	Total	153805	13760	0	167565

Source: Directorate of Elementary Education, December 2018

c) Cooks-cum-Helper

Sl.No.	Stage	Engaged as per norms
1	Primary	4185
2	Upper Primary	1920
	Total	6105

12. FOOD GRAINS(RICE) LIFTED DURING 2018-19

(Figures in MT)

	Allotted	Lifted	Utilised	Balance
Primary	2238.94	2190.96	2190.96	0
Upper Primary	1794.24	1761.59	1761.59	0
Total =	4033.18	3952.55	3952.55	0

13. ISSUES/PROBLEMS IN IMPLEMENTATION OF MDM SCHEME

- Transportation and communication bottleneck to reach the remote schools is a big hindrance towards monitoring of MDM implementation.
- Precarious to nil mobile network connectivity is the main hindrance in implementation of Automated Monitoring System through mobile SMS in the State.
- Testing of food samples served under Mid Day Meal scheme has not been conducted due to absence of reputed /accredited laboratory in the State.

14. COMPONENTS UNDER MID DAY MEAL SCHEME DURING 2019-20

- 1) Supply of free **food grains** @ 100 grams per child per day for Primary and @150 grams per child per day for Upper Primary stage respectively.
- 2) De-centralization of payment of cost of food grains to FCI at district level.
- 3) **Cooking/Conversion Cost** @ Rs.4.48/- per child per meal day and Rs.6.71/- per child per meal day for Primary and Upper Primary stages respectively.
- 4) Reimbursement of **Transportation cost of food grains** (Rice) at flat rate of Rs.260/- per Quintal from FCI base depot to schools.
- 5) Construction of **Kitchen – cum- store and procurement of kitchen devices**.
- 6) Payment of **honorarium to cook-cum-helpers** @ Rs.1000/- PM.
- 7) Funding pattern for Cost of foodgrain, Transportation cost and kitchen devices is 100% Central share. Whereas, the funding pattern for Cooking cost, Kitchen-cum-store and Honorarium to cook-cum-helper is **90 : 10** for Central and State share.

1. NORMS FOR COST OF MEAL PER CHILD PER SCHOOL DAY 2019-2020

Break up of nutrition content and cost of meal per child per day as per State Nutrition/Expenditure norm including Central Assistance and State contribution (unit cost) for Primary and Upper Primary stage during 2019-20 are as under:

A: Primary

Sl. No.	Food Item	Quantity (in grams)	Cost of quantity recommended (in Rs)	Calories	Protein content (in grams)
1	Food grains (Rice)	100	Free of cost	310	6
2	Pulses	20	1.72	70	6
3	Vegetables (in leafy	50	1.27	25	0
4	Oil & fat	5	0.60	45	0
5	Salt & condiments	As per need	0.22	0	0
6	Fuel	As per need	0.67	0	0
7	Any other item	0		0	0
	Total	0	4.48	450	12

B: Upper Primary

Sl. No.	Food Item	Quantity (in grams)	Cost of quantity recommended (in Rs)	Calories	Protein content (in grams)
1	Food grains (Rice)	150	Free of cost	535	8
2	Pulses	30	2.82	105	12
3	Vegetables (in leafy	75	1.85	43	0
4	Oil & fat	7.5	0.93	67	0
5	Salt & condiments	As per need	0.25	0	0
6	Fuel	As per need	0.86	0	0
7	Any other item	0		0	0
	Total		6.71	750	20

16. COVERAGE DURING 2019-20:

(Govt-Government, LB-Local Body, GA-Govt. Aided, STC-Special Training Centre, CS-Community School)

a) No. of Institutions covered under MDM

Sl.No.	Stage	Govt + LB	GA	STC/CS	Total
1	Primary	1629	11	0	1640
2	Upper Pri. with Pri.	1018	49	0	1067
3	Upper Primary	73	0	0	73
	Total	2720	60	0	2780

Source: UDISE/Directorate of Elementary Education, December 2019

b) No. of children covered under MDM

Sl.No.	Stage	Govt + LB	GA	STC/CS	Total
1	Primary	94441	8142	0	102583
2	Upper Primary	52870	5524	0	58394
	Total	147311	13666	0	160977

Source: Directorate of Elementary Education, December 2019

c) Cooks-cum-Helper

Sl.No.	Stage	Engaged as per norms
1	Primary	3971
2	Upper Primary	1820

	Total	5791
--	--------------	------

17. FOOD GRAINS(RICE) LIFTED DURING 2019-20

(Figures in MT)

	Allotted	Lifted	Utilised	Balance
Primary	1904.83	1895.31	1895.31	0
Upper Primary	1580.32	1570.61	1570.61	0
Total =	3485.15	3465.92	3465.92	0

18. ISSUES/PROBLEMS IN IMPLEMENTATION OF MDM SCHEME

- Delay in release of fund.
- Transportation and communication bottleneck in the State.
- Poor mobile network connectivity at block level hampers the digital monitoring.

19. COMPONENTS UNDER MID DAY MEAL SCHEME DURING 2020-21

- Supply of free **food grains** @ 100 grams per child per day for Primary and @150 grams per child per day for Upper Primary stage respectively.
- De-centralization of payment of cost of food grains to FCI at district level.
- Cooking/Conversion Cost** @ Rs.4.97/- per child per meal day and Rs.7.45/- per child per meal day for Primary and Upper Primary stages respectively.
- Reimbursement of **Transportation cost of food grains** (Rice) at flat rate of Rs.260/- per Quintal from FCI base depot to schools.
- Construction of **Kitchen – cum- store and procurement of kitchen devices**.
- Payment of **honorarium to cook-cum-helpers** @ Rs.1000/- PM.
- Funding pattern for Cost of foodgrain, Transportation cost and kitchen devices is 100% Central share. Whereas, the funding pattern for Cooking cost, Kitchen-cum-store and Honorarium to cook-cum-helper is **90 : 10** for Central and State share.

20. NORMS FOR COST OF MEAL PER CHILD PER SCHOOL DAY 2020-21.

Break up of nutrition content and cost of meal per child per day as per State Nutrition/Expenditure norm including Central Assistance and State contribution (unit cost) for Primary and Upper Primary stage during 2020-21 are as under:

A: Primary

Sl. No.	Food Item	Quantity (in grams)	Cost of quantity recommended (in Rs)	Calories	Protein content (in grams)
1	Food grains (Rice)	100	Free of cost	310	6
2	Pulses	20	1.91	70	6
3	Vegetables (in leafy	50	1.41	25	0
4	Oil & fat	5	0.66	45	0
5	Salt & condiments	As per need	0.24	0	0
6	Fuel	As per need	0.75	0	0
7	Any other item	0		0	0
	Total	0	4.97	450	12

B: Upper Primary

Sl. No.	Food Item	Quantity (in grams)	Cost of quantity recommended (in Rs)	Calories	Protein content (in grams)
1	Food grains (Rice)	150	Free of cost	535	8
2	Pulses	30	3.12	105	12
3	Vegetables (in leafy	75	2.05	43	0
4	Oil & fat	7.5	1.03	67	0
5	Salt & condiments	As per need	0.28	0	0
6	Fuel	As per need	0.97	0	0
7	Any other item	0		0	0
	Total		7.45	750	20

21.COVERAGE DURING 2020-21:

(Govt-Government, LB-Local Body, GA-Govt. Aided, STC-Special Training Centre, CS-Community School)

i) No. of Institutions covered under MDM

Sl.No.	Stage	Govt + LB	GA	STC/CS	Total
1	Primary	1615	9	0	1624
2	Upper Pri. with Pri.	1037	50	0	1087
3	Upper Primary	71	0	0	71
	Total	2723	59	0	2782

Source: UDISE/Directorate of Elementary Education, December 2020

ii) No. of children covered under MDM2020-21

Sl.No.	Stage	Govt + LB	GA	STC/CS	Total
1	Primary	95012	8217	0	103229
2	Upper Primary	50285	5153	0	55438
	Total	145297	13370	0	158667

Source: Directorate of Elementary Education, December 2020

iii) Cooks-cum-Helper

Sl.No.	Stage	Engaged as per norms
1	Primary	4072

2	Upper Primary	1858
	Total	5930

22. FOOD GRAINS(RICE) LIFTED DURING 2020-21

(Qty. in MT)

	Allotted	Lifted	Utilised	Balance
Primary	2556.54	2556.54	2556.54	0
Upper Primary	2161.26	2161.26	2161.26	0
Total =	4717.80	4717.80	4717.80	0

23. ISSUES/PROBLEMS IN IMPLEMENTATION OF MDM SCHEME

- Delay in release of fund.
- Distribution of foodgrains during the lockdown period was a challenging task.
- Poor mobile network connectivity at block level hampers the digital monitoring.

Sd/-

(Mongol Taki)DDSE (MDM)
For Director of Elementary
Education
Govt. of Arunachal Pradesh
Itanagar